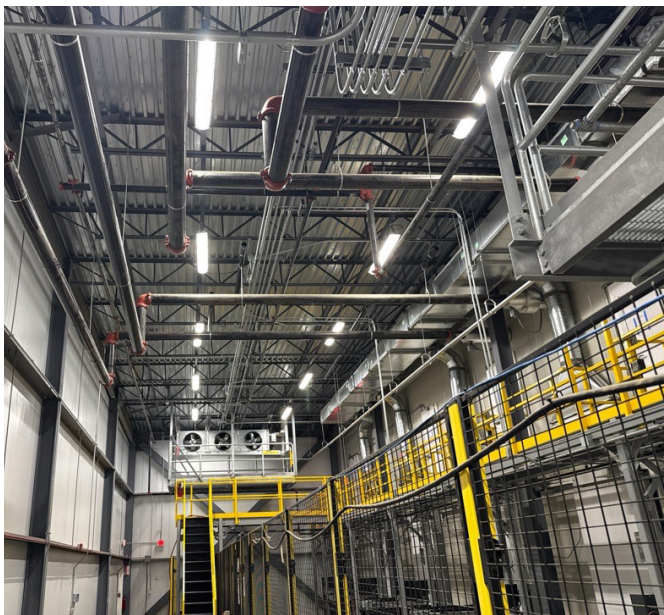


PROJECT EXPERIENCE

# BLUE BELL CREAMERIES

Interstates supported Blue Bell Creameries’ expansion in Broken Arrow, Oklahoma by providing electrical construction and virtual design & construction (VDC) services across both new and retrofit scopes. The project centered on integrating a new automated storage and retrieval system (ASRS) freezer, where Interstates delivered the electrical infrastructure—including power distribution, lighting, and fire alarm systems—to support the facility. Working in an active plant with tight deadlines, the team used intentional planning, safety protocols, and creative problem-solving to maintain operations while completing complex installations. Through strong collaboration, VDC modeling, and a proactive approach to challenges, Interstates helped keep the project on track and enabled Blue Bell to expand efficiently, safely, and with confidence in its upgraded facility.



## KEY SCOPE COMPONENTS

**Electrical Scope for ASRS Freezer:** Delivered power distribution, lighting, and fire alarm systems to support the new automated storage and retrieval system installation.

**Retrofit Integration in Active Facility:** Executed electrical work within an operating plant, maintaining production while tying new systems into existing infrastructure.

**VDC-Driven Coordination & Planning:** Leveraged VDC modeling and collaboration to optimize installation, reduce clashes, and keep the project on schedule.

## SERVICES PROVIDED

Electrical Construction

## PROJECT SPECIFICATIONS



INDUSTRY

Food & Beverage



COMPLETION DATE

2025



LOCATION

Broken Arrow, OK